

# Hay Burners Equine Tub Topper installation instructions

## What's Included:

- "Tub Topper" slow feed net with elastic cord
- Cable Ties (8) \*Fastening option 1
- Tie Cords (8) \*Fastening option 2
- Buckle Strap assemblies (3)

## What's Required:

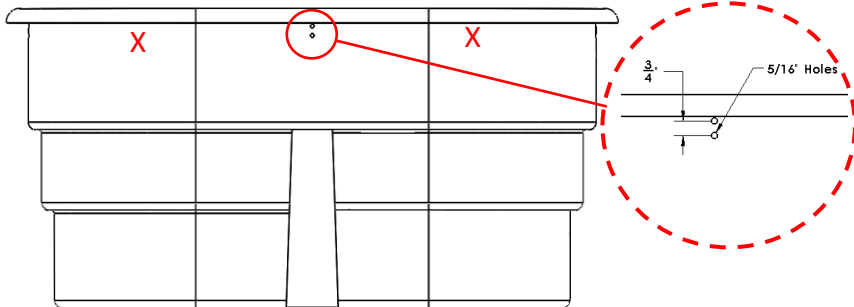
- Rubbermaid stock tank or similar sized plastic/rubber tub with lip on rim.

## Suggested tools (not provided):

- Power drill and 5/16" drill bit
- Marker or Pencil
- Measuring tape or ruler
- Side Cutters (optional)

## Step 1 (Back of Tub)

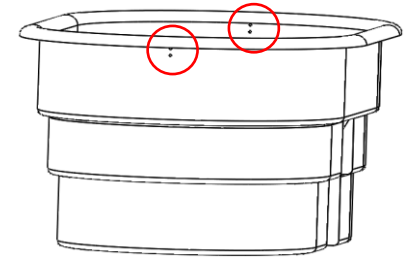
- Using a 5/16" drill bit, drill holes though the tub in the center of the back of tank approximately as shown below. Note: These holes are for securing the topper elastic to the tub.
- Proceed to drill additional sets of holes toward the rounded corners shown as red X below (holes are just under the lip of the tank.)



Back Side of Tub

## Step 2 (Ends of Tub)

- Repeat step 1 in the center of both rounded ends of the tub indicated by the red circles.
- Again, these holes are for securing the topper elastic to the tub.



## Step 3 (Front of Tub)

- Drill 3 sets of holes for the buckle straps. Holes should be roughly 6" below the lip of the tank and each set should be about 1-1/4" apart - see Red dots below.

**NOTE:** For the 50 gallon Rubbermaid tubs you can use either 2 sets of straps or 3 straps, if using all 3, the center strap will need to be installed under side of the name (bottom photo)



#### Step 4 (Front of Tub)

- Using a cable tie provided fasten the Buckle Strap to the tub through the holes created in Step 3. Tie goes through the loop at the bottom of the buckle strap



#### Step 5 (Ends of Tub)

- Using either the cable ties or tie cords provided (depending on preference) Feed the desired fastening method through the drilled holes along top of tub (5 locations), 2 at each of the rounded ends position and the other 3 along back of tub.



#### Step 6

- For 75 and 100-150 gallon toppers, locate the two seams on the net or colored tabs on the 40-50 gallon toppers. These line up with the center of narrow end of the tub. Please note the Topper 300 are not directional so there are no seams or colored tabs to align to the tub.
- Using the Cable Ties or optionally, the Tie Cords, fasten the net capturing the net material and elastic cord. It is recommended to start at one of the rounded end positions then the center back position and finally the other rounded end position. **With either method it is recommended to secure the net and cord loosely until topper is on, then tighten the ties.**
- When using the Cable Ties snip off the remaining end extending from the clinching feature of the tie using side cutters.



The ties along the top help keep the net in place so it doesn't slip off while refilling. They also help keep the net in place if the horse yanks on the netting. More ties can be added "as needed" if the elastic gets pulled up over the lip of the tank by the horse – **Note these ties along the top are only on 3 sides of the tank, buckle straps are on the last side so you can refill the tub**

#### Step 7

- Grab the net at the elastic cord and pull it over the front of the tub to complete the installation.
- Feed the Buckle Straps through the net and elastic cord and snap the buckles together to secure the net.
- To fill the tub simply unclasp the buckle straps, grab the net near the lip of the tub at the front and pull out and up to manage the elastic cord over the lip of the tub.
- Flip the loose net material over the back of the tub to open an area large enough to place a bale into the tub.

